

BLUEWATER PRO HOW TO USE GUIDE



BLUEWATER

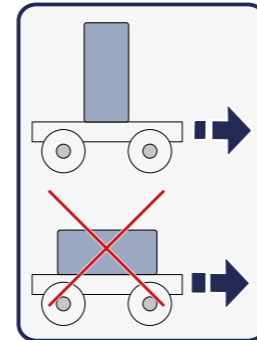


**BLUEWATER PRO
HOW TO USE GUIDE**



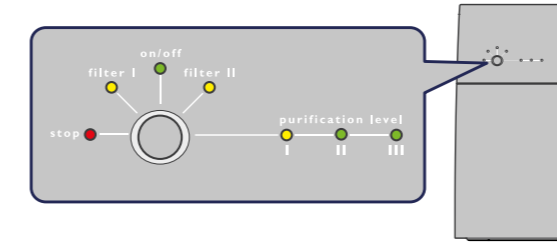
You'll find everything you need to know regarding how to use your new Bluewater Pro purifier in this How to use Guide. Or scan the QR code for a user-friendly online version of the guide.

For products with serial 1845-01001 to 220401000.

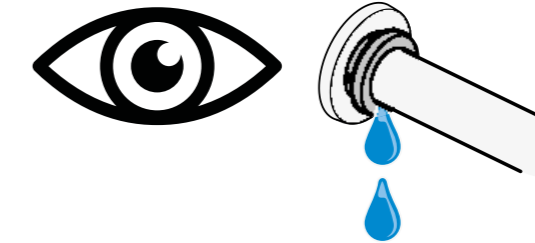


How to take care of your Bluewater Pro

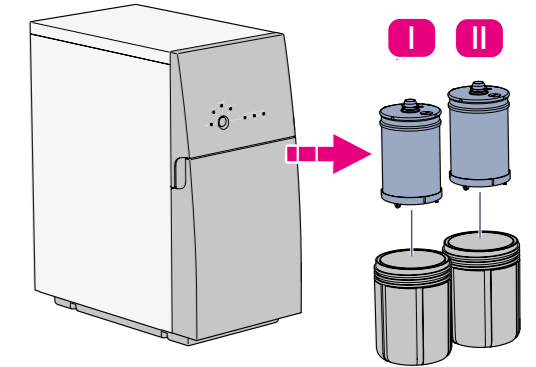
Check the indicator lights
- Regularly



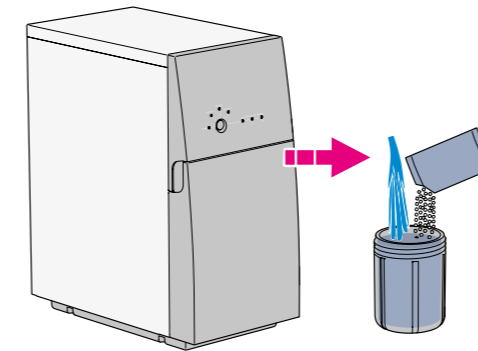
Check for leaks
- Regularly



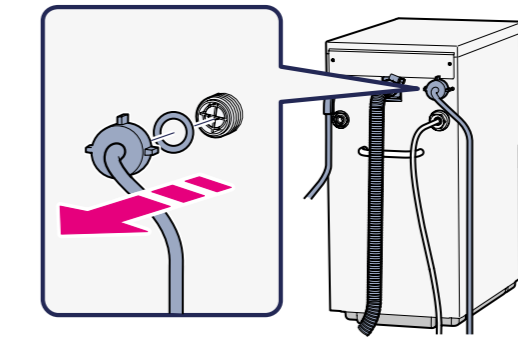
Change your prefilters
- Every 6th month or when the filter indicators is lit



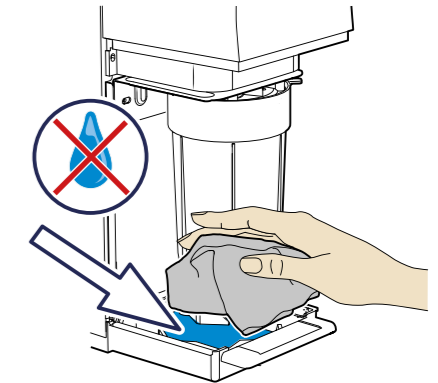
Descaling
- Every 4-6th month



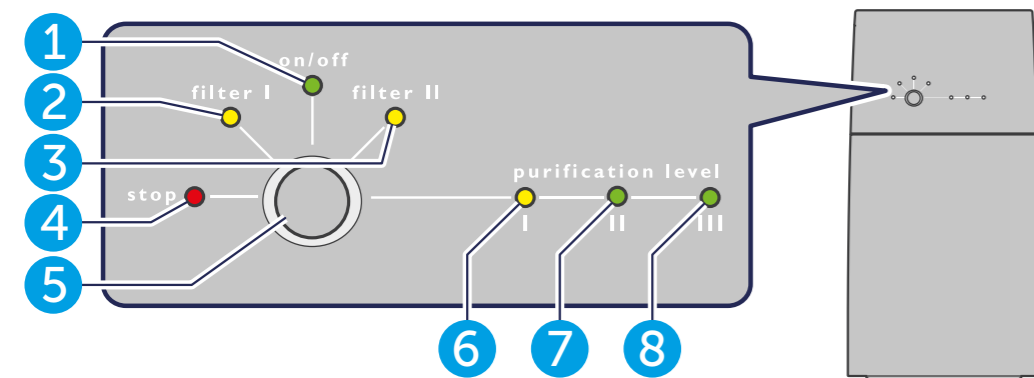
Clean the grid filter
- Once a year



Wipe off condensation from base plate
- When necessary



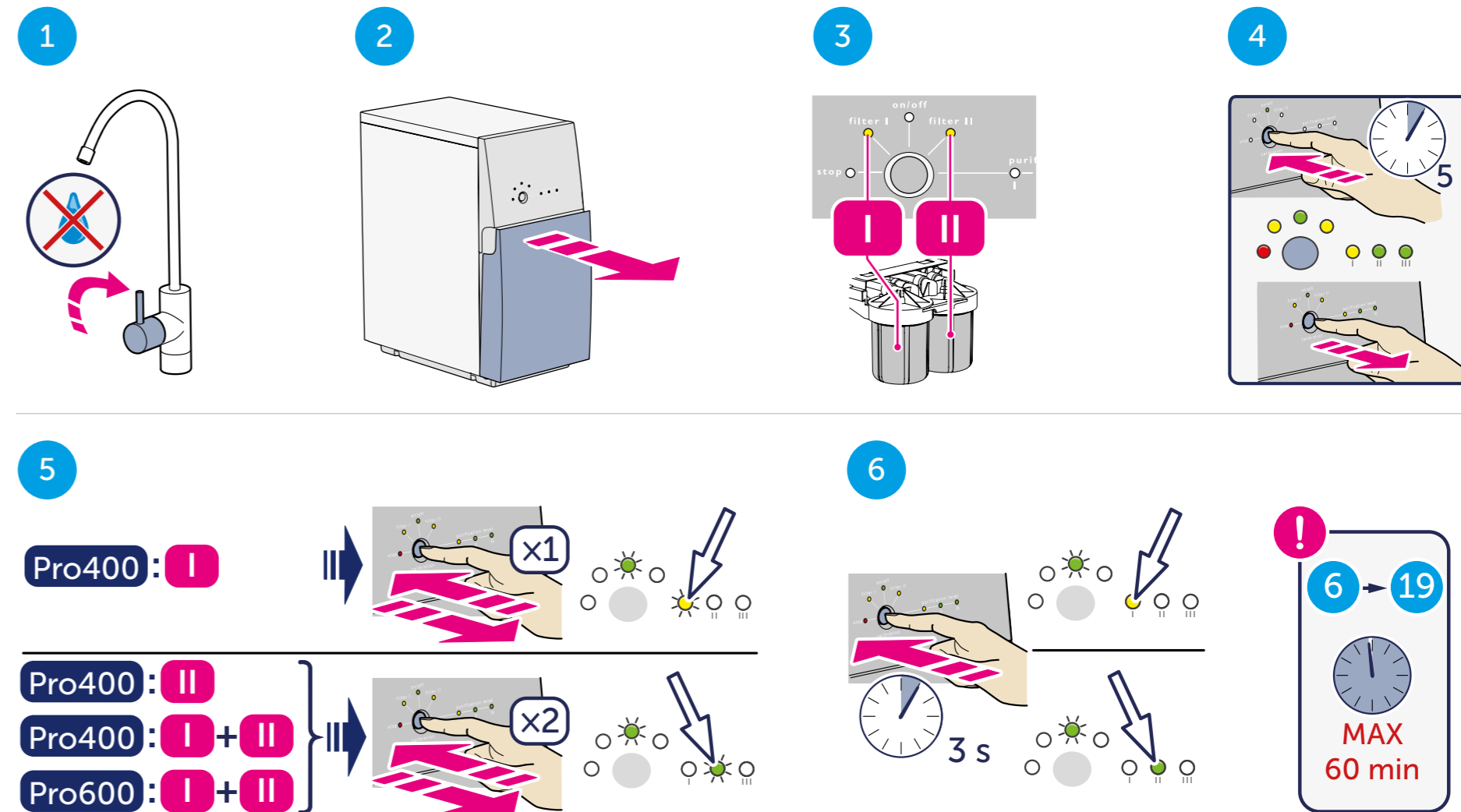
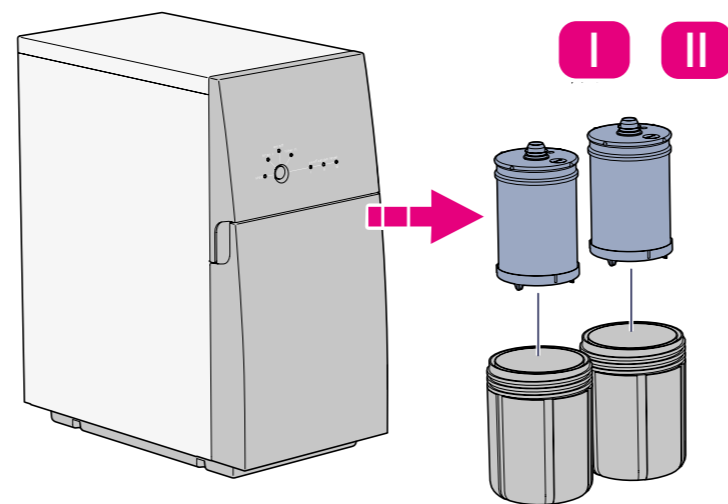
Check indicators lights



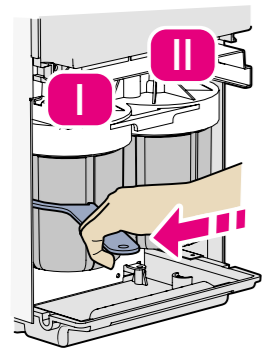
Pos	Light/button	Description
1	on/off	On: The water purifier is connected to power. Off: The water purifier is not connected to power. Flashes: The water purifier flushes. Flushing cannot be stopped.
2	filter I	On: The filter must be replaced. Pro 600: Replace both Carbon Block filters.
3	filter II	On: The filter must be replaced. Pro 600: Replace both Carbon Block filters.
4	stop	Flashes/On: Something is wrong, see "Troubleshooting" in owner's manual
5	button	Various functions
6	purification level I	On: Purification level I-III indicates clean water purification level. If purification level never reaches level III, the membrane may be degraded. Consult Owner's manual.
7	purification level II	On:
8	purification level III	On:

Change the prefilters

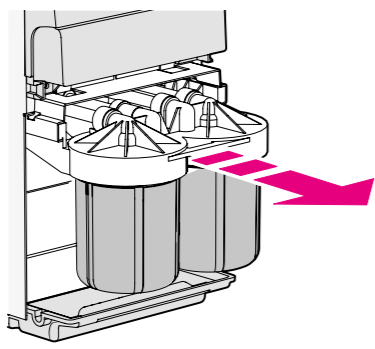
<https://www.bluewatergroup.com/where-to-buy/>
Pro 600: change both filters when filter light I or II lights up.



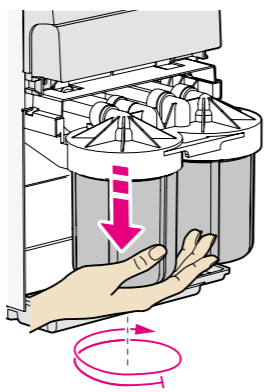
7



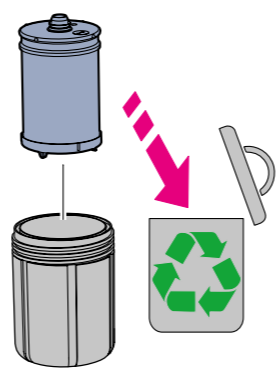
8



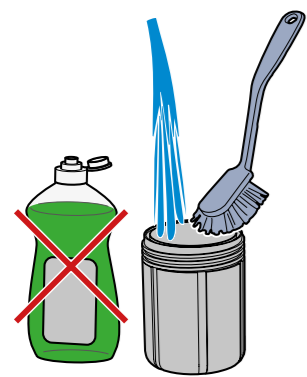
9



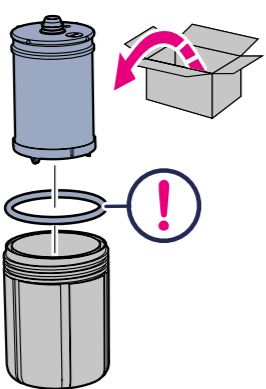
10



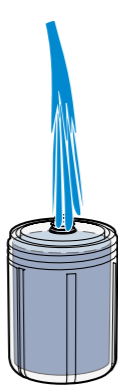
11



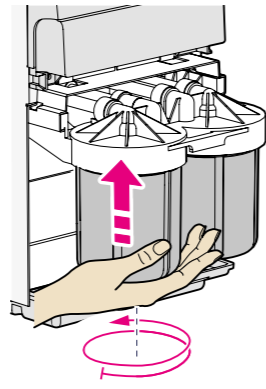
12



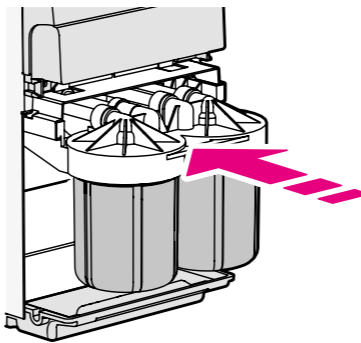
13



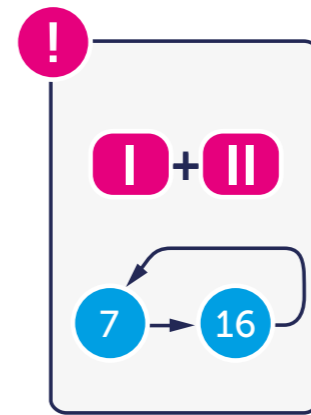
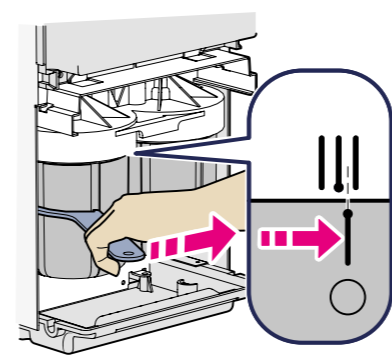
14



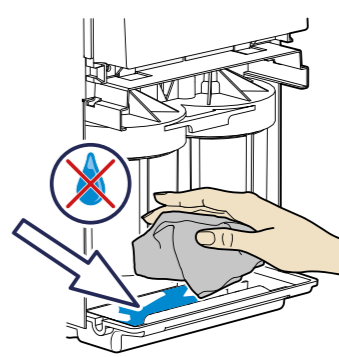
15



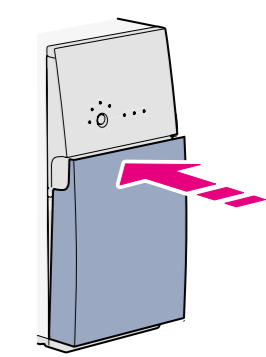
16



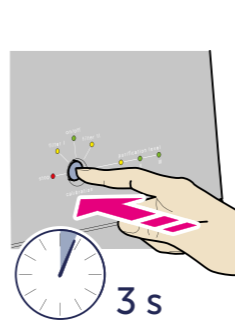
17



18



19



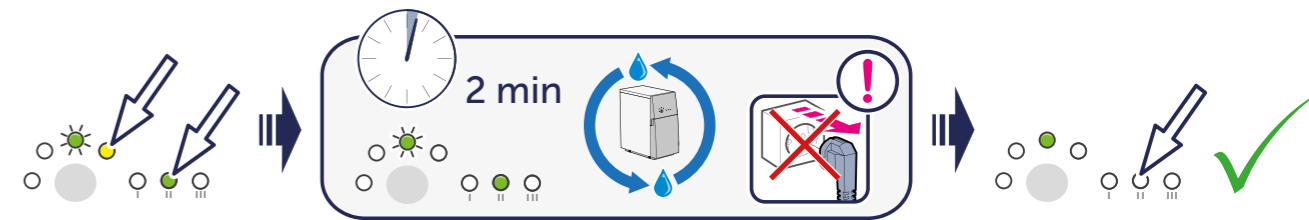
Pro400: I



Pro400: II

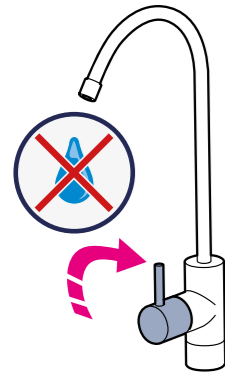
Pro400: I + II

Pro600: I + II

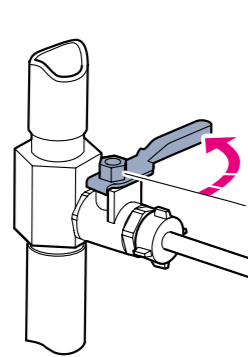


Descaling

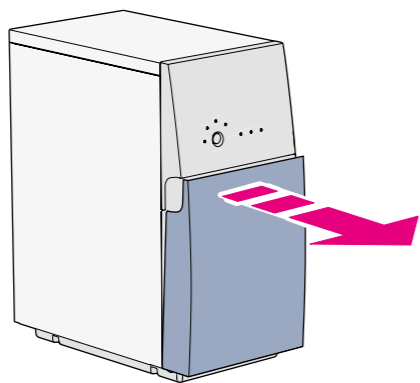
1



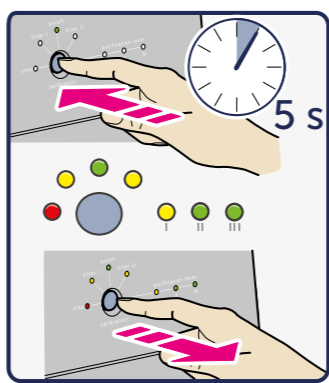
2



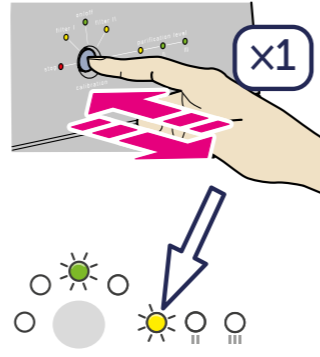
3



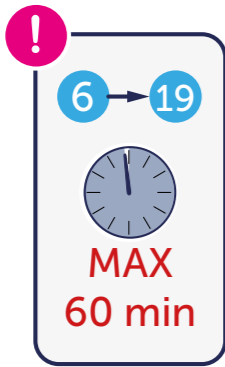
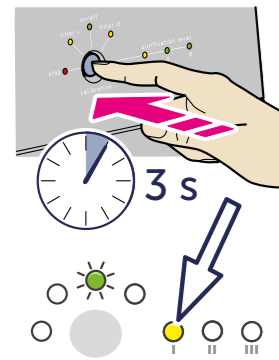
4



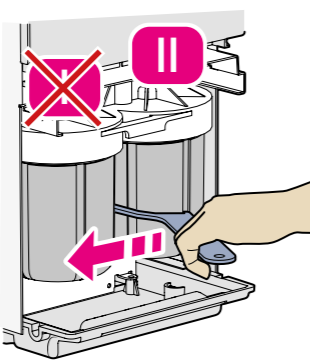
5



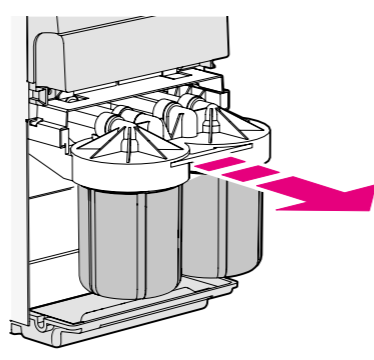
6



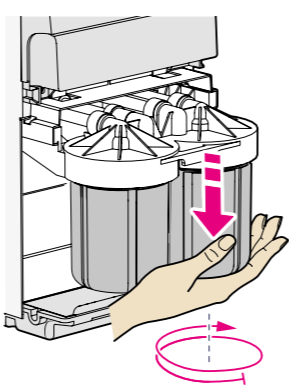
7



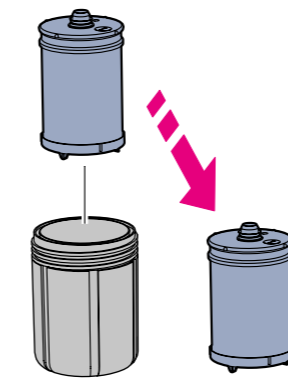
8



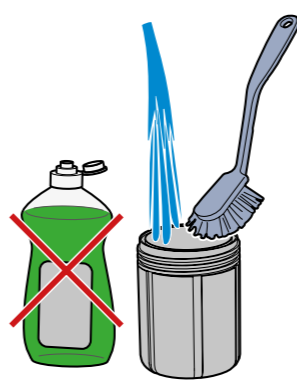
9



10



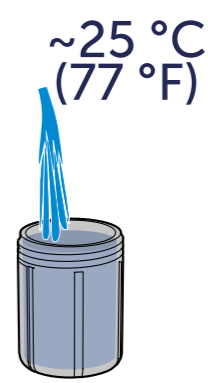
11



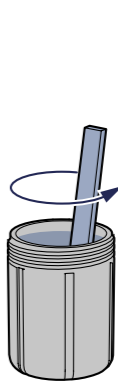
12



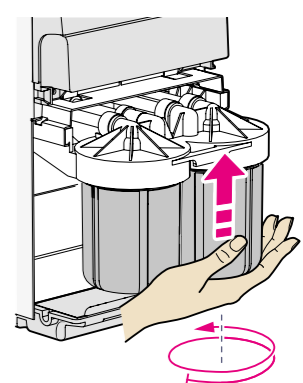
13



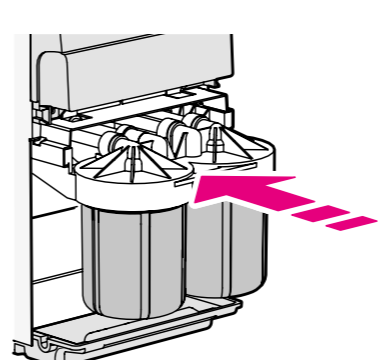
14



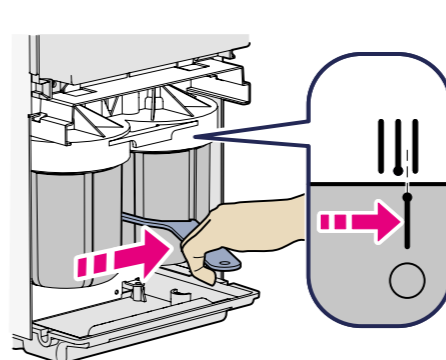
15



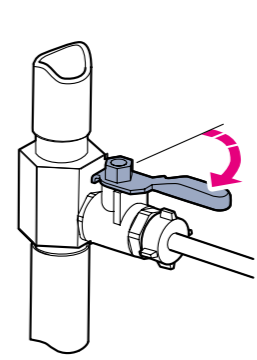
16



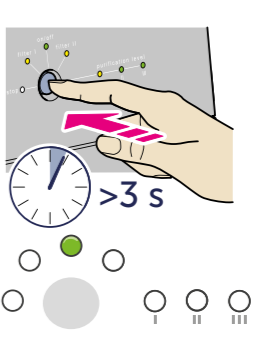
17



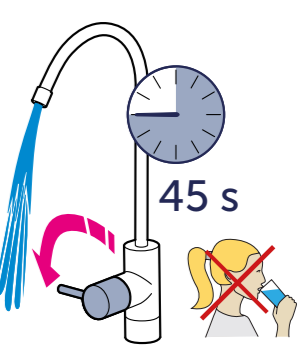
18



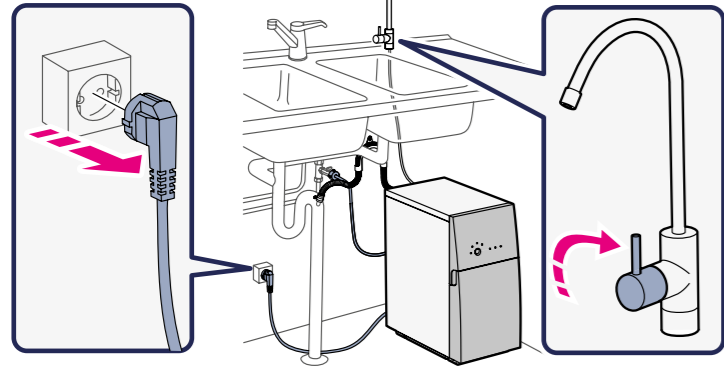
19



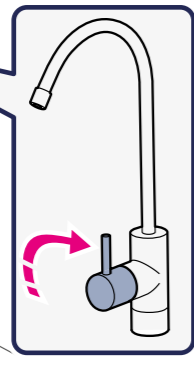
20



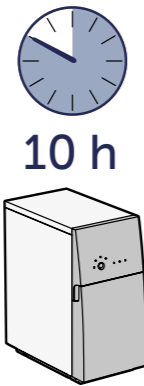
21



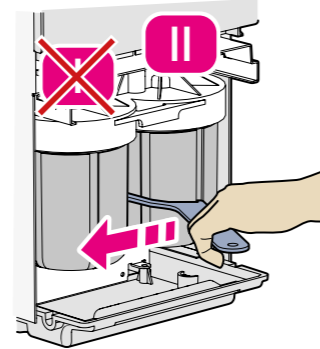
22



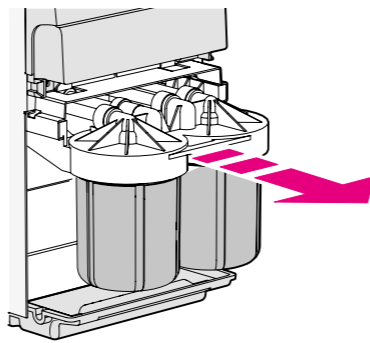
23



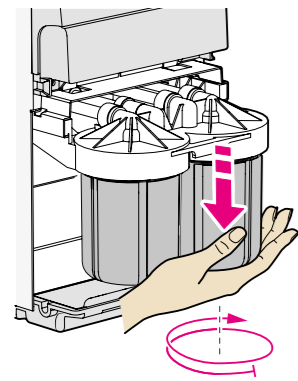
24



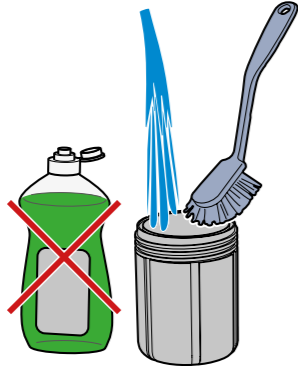
25



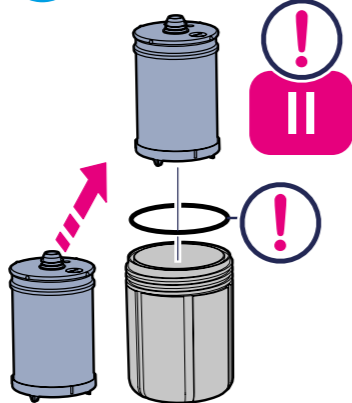
26



27



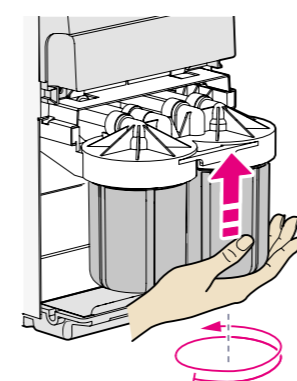
28



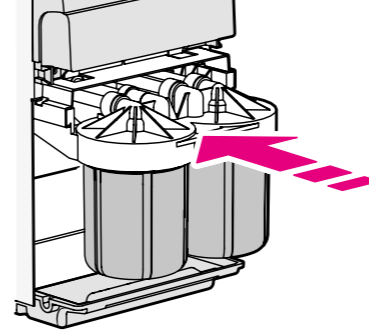
29



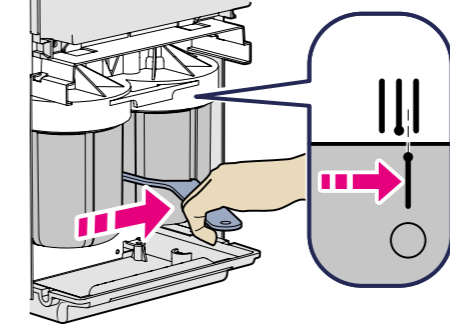
30



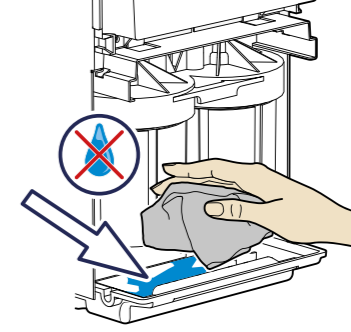
31



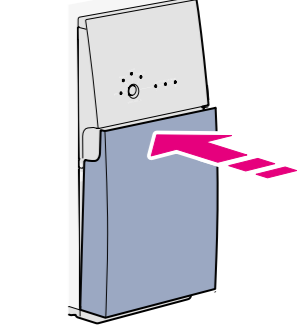
32



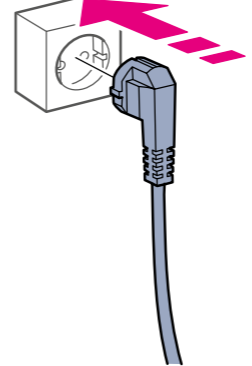
33



34



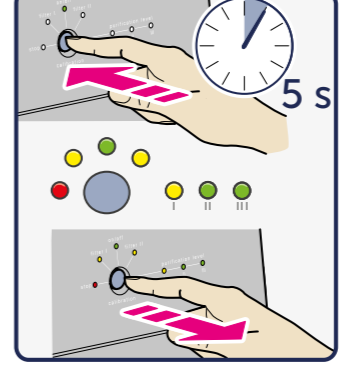
35



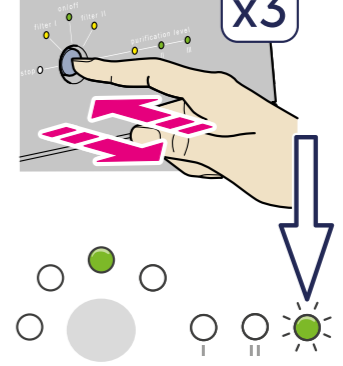
36



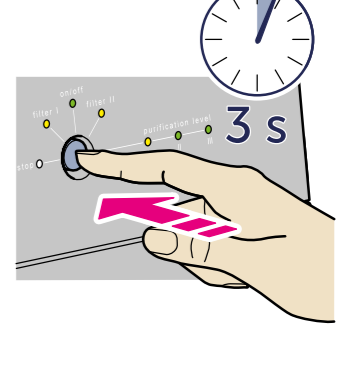
37



38



39



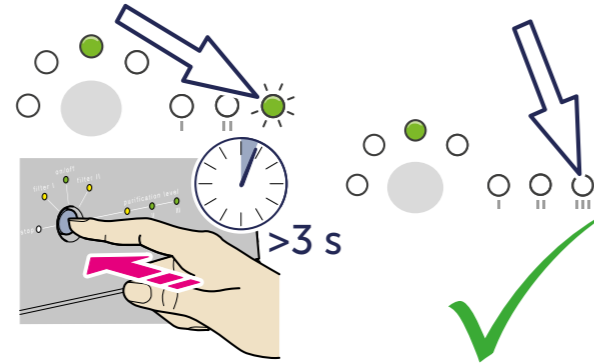
40



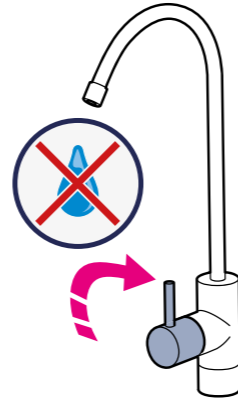
41



42

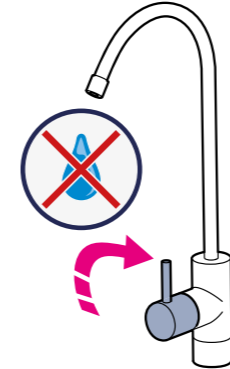


43

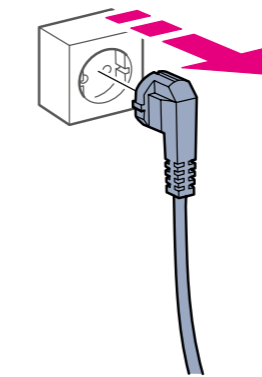


Clean the grid filter

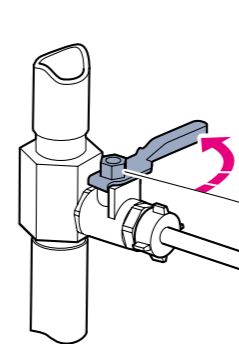
1



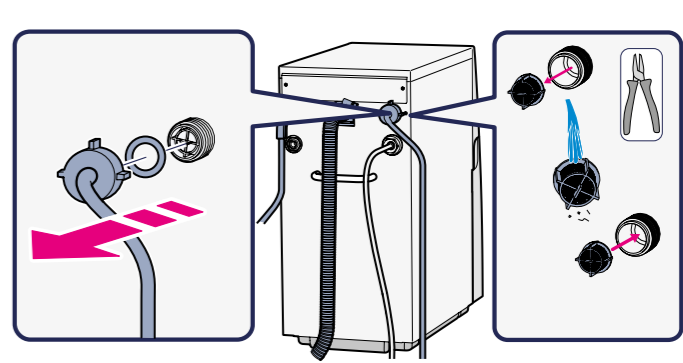
2



3

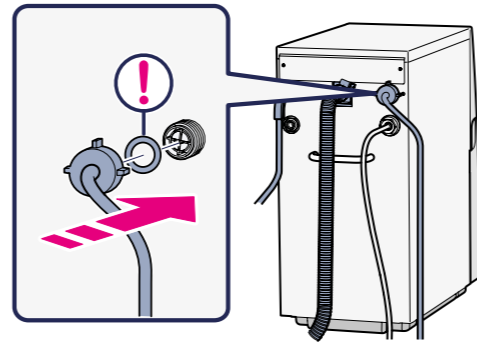


4

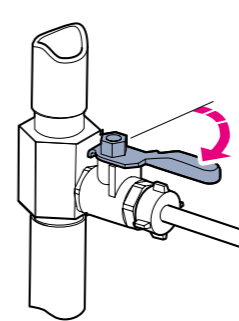


5

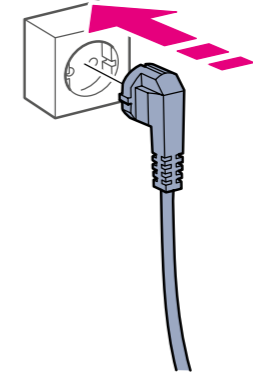
6



8



9



10



**FOR YOU &
OUR PLANET**



Document No 822901803 Revision 2022© Bluewater Group 2020

ENG: The installation must comply with applicable local plumbing codes and regulations.

FR: L'installation doit respecter les normes et réglementations de plomberie locales applicables

ES: La instalación de fontanería debe cumplir con la reglamentación y las normativas locales.

PT: A instalação deve cumprir as normas e os regulamentos de canalização locais aplicáveis.

IT: L'installazione deve rispettare i codici e le regolamentazioni idrauliche locali vigenti.

DE: Die Installation muss die örtlichen Vorschriften und Richtlinien für Wasser bzw. Sanitäreanlagen erfüllen.

PL: Muszą być spełnione obowiązujące przepisy i regulacje dotyczące instalacji wodociągowej.

RU: Установка должна соответствовать действующим местным санитарным нормам и правилам.

SE: Installationen måste uppfylla gällande VVS-regler och -förfordningar.

FI: Asennus on tehtävä sovellettavien paikallisten LVI-sääntöjen ja -määräysten mukaisesti.

NO: Installasjonen må utføres i henhold til gjeldende praksis og bestemmelser for rørleggerarbeid.

DK: Installationen skal overholde de gældende lokale regler og forskrifter for VVS-installationer.

ZH: 必须按照适用的当地管道标准和法规进行安装。

ID: Instalasi harus mematuhi kode pipa dan peraturan setempat yang berlaku.

KO: 해당 지역 위생 공사 기준 및 규정을 준수하여 설치해야 합니다

BLUEWATER IS A SWEDISH WATER
COMPANY THAT PURIFIES LOCAL
SOURCES OF WATER INTO PURER,
FRESH DRINKING WATER.
WE'RE COMMITTED TO REDUCING
PLASTICS IN OUR OCEANS BY
ELIMINATING THE NEED FOR
SINGLE-USE PACKAGING. JOIN US.

BLUEWATERGROUP.COM

BLUEWATER
Danderydsgatan 11
114 26 Stockholm
Sweden

info@bluewatergroup.com



BLUEWATER